

INTERFACEGO NK8

for the Nokia N800/N810
Version 1.2.7

TABLE OF CONTENTS

Chapter 1 – SETTING UP YOUR NOKIA	PAGE 3
Chapter 2 – INSTALLING THE NK8 SOFTWARE	PAGE 6
Chapter 3 – INSTALLING & USING THE NK8 CONFIG UTILITY	PAGE 10
Chapter 4 – RUNNING THE NK8 SOFTWARE	PAGE 16
Chapter 5 – UPGRADING YOUR SOFTWARE	PAGE 20
Appendix A – Troubleshooting	PAGE 21
Appendix B – Software License Agreement	PAGE 23

CHAPTER 1 - SETTING UP YOUR NOKIA

Setup and configure your Nokia N800/N810 per the instructions included with the unit.

N800 ONLY: Please be sure to install the included memory card in the slot below the kickstand on the bottom of the unit (as pictured below).



N800 users - please install the included memory card here

N810 ONLY: The interfaceGO NK8 will install on the Nokia N810's internal memory – there is no need to install a memory card.

The interfaceGO NK8 requires OS2008 for the Nokia N800/N810. If you're unsure what version OS your Nokia came bundled with, it would be best to download, install, and run the Nokia update utility to ensure you are running the latest OS.

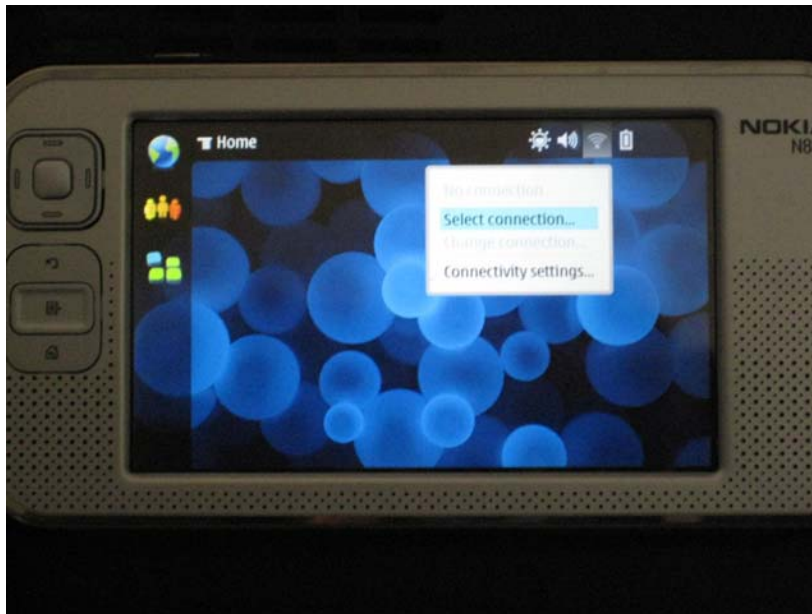
If you purchased the "Pre-Configured" option from interfaceGO, then your Nokia is already running the latest version and you may skip the following step.

Otherwise, running the update is fairly quick and simple. Please download the utility from the following location and follow the on-screen instructions:

<http://europe.nokia.com/A4678158>

Once the OS update is complete, the on-screen setup wizard will walk you through setting up your Nokia for the first time. To ensure the correct time display, be sure to double-check the "Date and Time" settings under the Nokia's Control Panel. Make sure the correct "Home City" is selected – simply choose a city within your time zone.

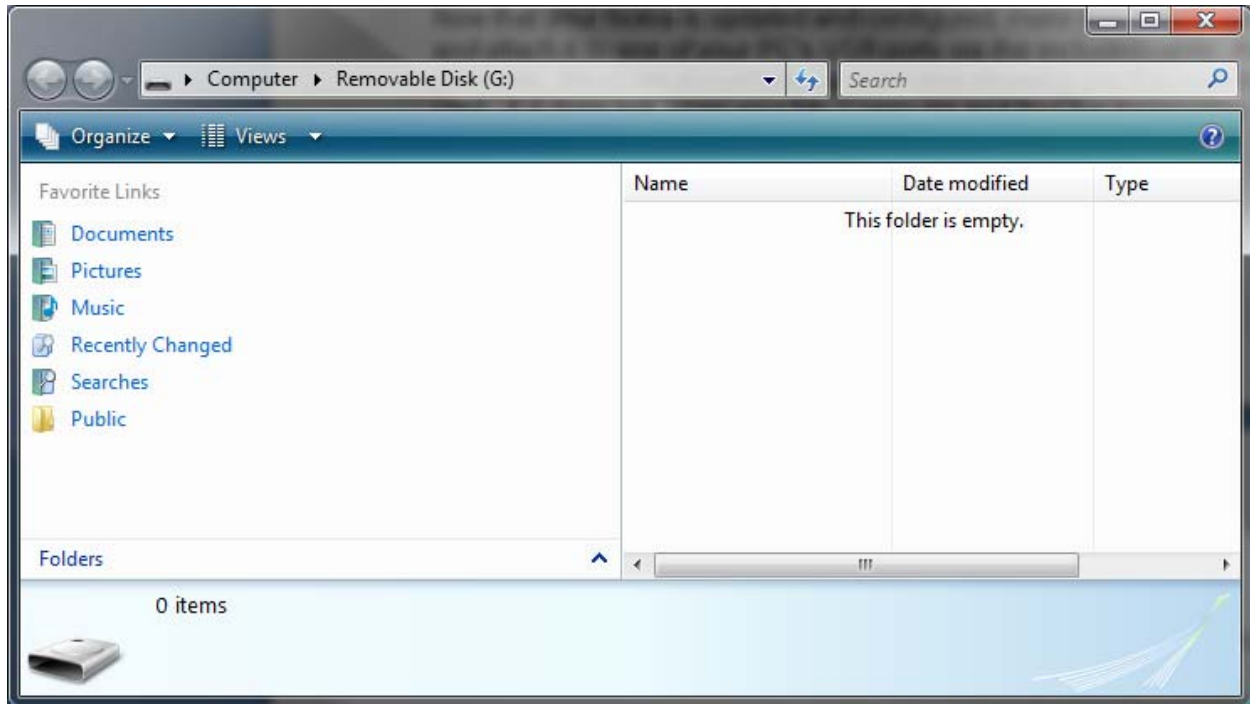
Before we go any further, let's configure the Nokia for your home's wifi connection. Simply click the wireless icon on the top right of the screen and choose SELECT CONNECTION as pictured below.



Setting up your wireless connection

Please follow the on-screen instructions to complete the setup. interfaceGO highly recommends using WPA or higher encryption on your home's wifi setup. If encryption is enabled, the Nokia will prompt you to type in your passcode.

Now that your Nokia is updated and configured, make sure the Nokia is at its desktop screen and attach it to one of your PC's USB ports via the included cable. After a few moments, Windows should pop up a window showing you the contents of the Nokia. If it does not, open your My Computer and find the Removable Disk associated with your Nokia's memory location.



Your Nokia's memory location

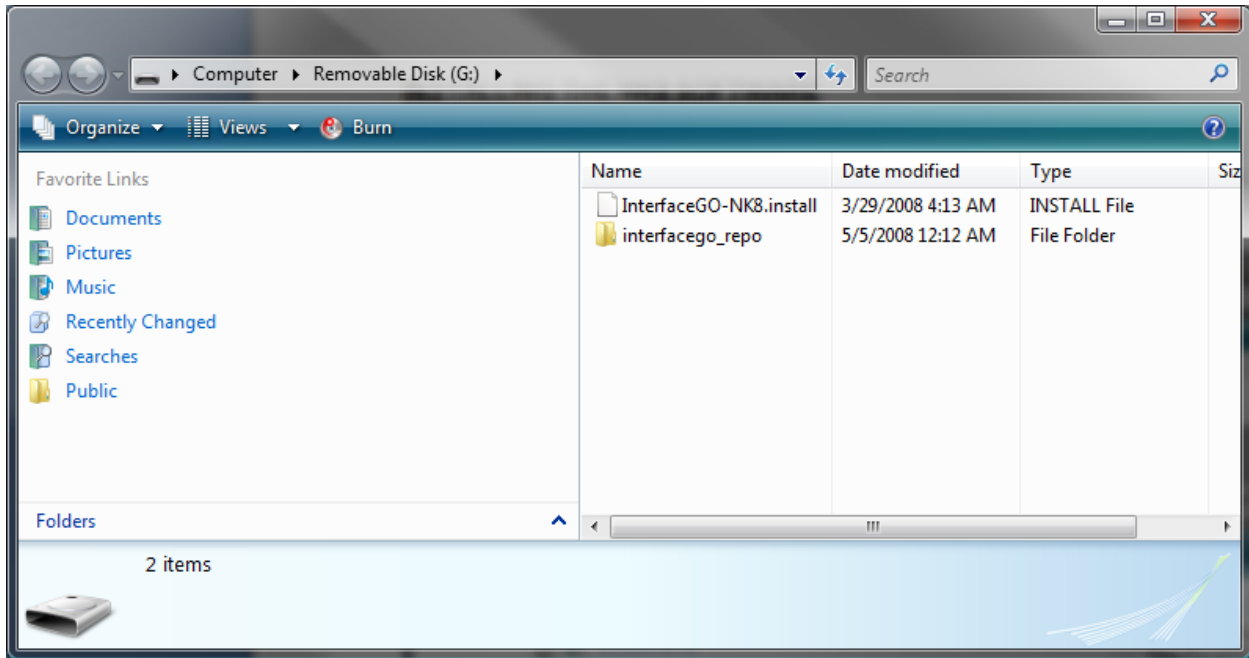
This is the location we'll be using to store:

- the interfaceGO NK8 software
- your interface's configuration file
- your license file

If you purchased the "Pre-Configured" option from interfaceGO, then your Nokia is already pre-loaded with the interfaceGO NK8 software and license file. Otherwise, proceed to the next chapter for instructions on installing the NK8 software.

CHAPTER 2 - INSTALLING THE NK8 SOFTWARE

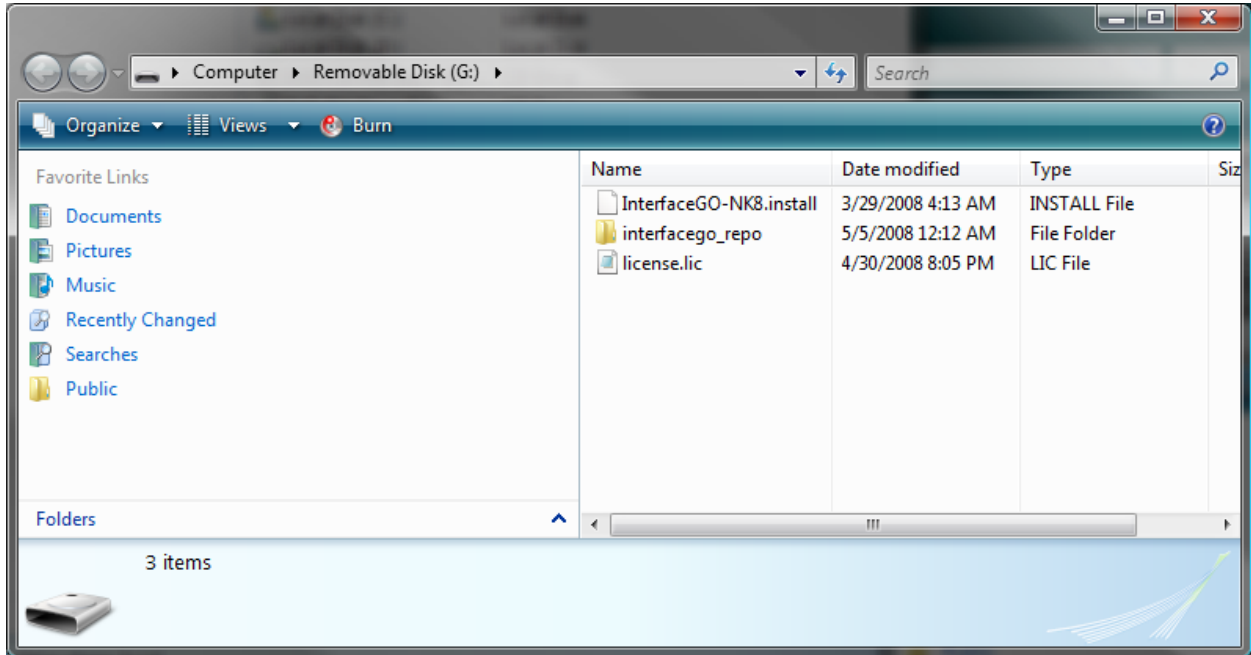
If you received a CD containing the NK8 software, you will need to copy the CONTENTS of the "interfaceGO NK8" folder onto the root of your Nokia's memory location, as shown in the screenshot below.



Your Nokia's memory card with the NK8 installation files copied over

If you received your NK8 software via download, extract the contents of the .zip file to the root of your Nokia's memory location. The result should be the same as shown above.

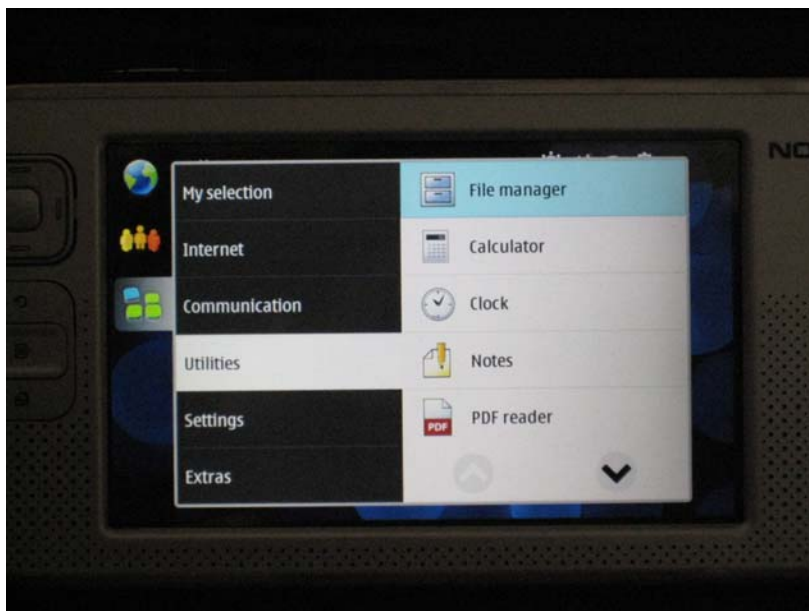
This would also be a good time to copy your license file "license.lic", which you should have received via email, to the Nokia. If you have not yet received your license file, please email support@interfacego.com with your Activation Code. Your Activation Code will be provided to you when you launch the NK8 software for the first time.



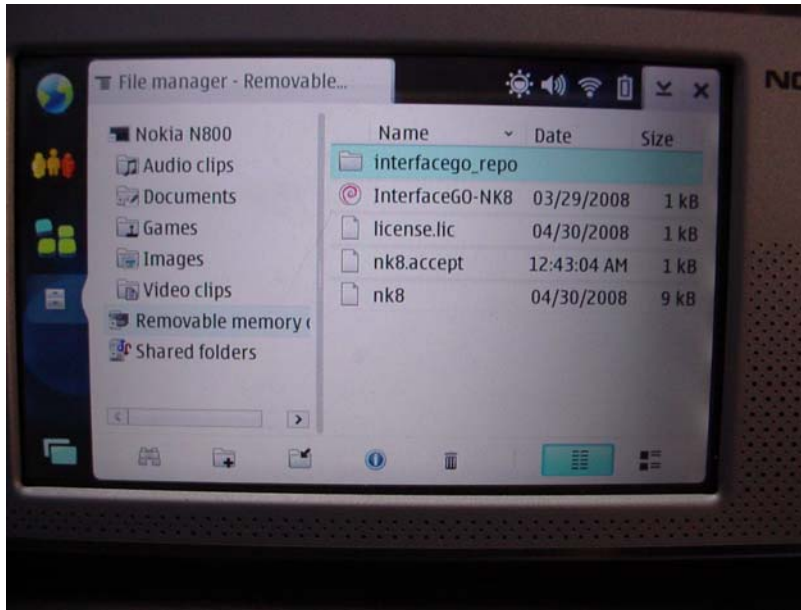
Your Nokia's memory location containing the NK8 software and required license file

Now that the necessary files have been copied over, it's time to install the software from the Nokia itself. Please unplug the Nokia from your PC's USB port. This step is VERY important – when the Nokia is plugged in to your PC's USB port, your PC has exclusive access to the memory location. Please remember that you will not be able to install or run the NK8 software while the Nokia is attached to your PC.

With the USB cable unplugged, open the Nokia's File Manager as shown below.



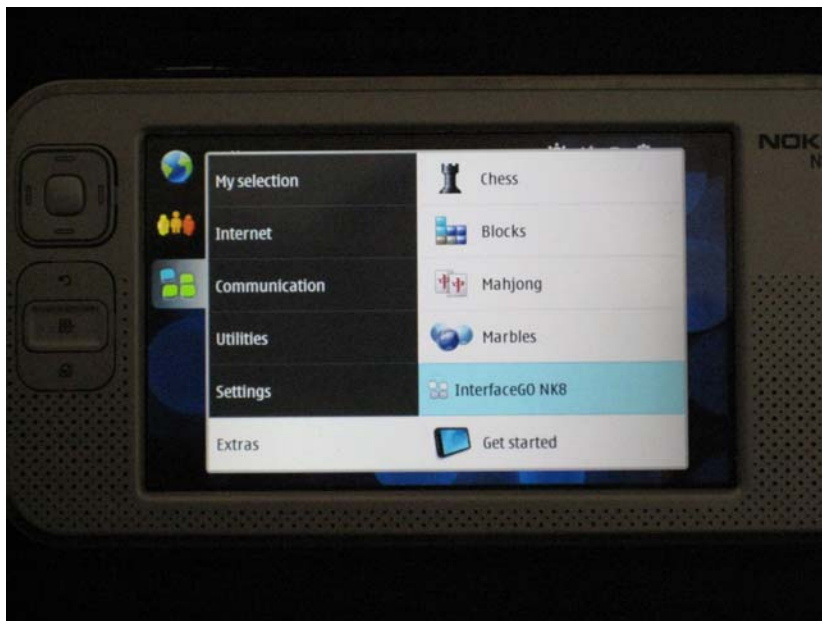
Starting the Nokia's File Manager icon



The Nokia File Manager screen

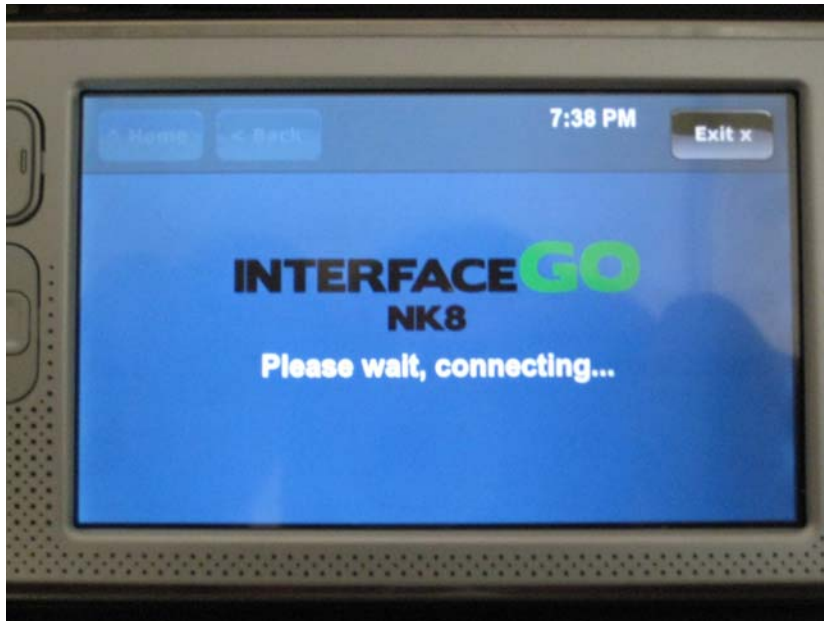
On the left-hand side of the File Manager, tap the Nokia's "Removable Memory Card" (or "Internal Memory Card"). You should then see the files we previously copied over on the right-hand portion of the window. Double-tap the "InterfaceGO-NK8" file (with the red/white swirl) to start the installation. Simply follow the on-screen prompts to complete the installation.

Once the NK8 installation is complete, close out of the Application Manager and File Manager and we can launch the NK8 software for the first time. The interfaceGO NK8 software icon is located under "Extras" in the Nokia's program menu. Tap the icon to start the application.



The interfaceGO NK8 application icon

After tapping the icon, the Nokia may not appear to do anything for 5-10 seconds. This is completely normal – the Nokia is pre-loading the support files needed to run the NK8 software. Please be patient. Once this is complete, the screen will turn white, then the "connecting" screen will appear as shown below.



The "connecting" screen

Please be patient while the NK8 locates the ISY via UPnP on your network. Once the ISY is found, you will see one of three things:

- **SOFTWARE LICENSE AGREEMENT.** This only appears once. Please be sure to read the complete license agreement located at the end of this document and also on the NK8 Config Utility. If you do not agree to the terms, you must discontinue use of this product immediately.

- **LICENSE ERROR.** This means that you have not yet copied your "license.lic" to the Nokia's memory card, or there is a problem with your license file. Please contact support@interfacego.com with the displayed "Activation Code" to obtain a good license file.

- **CAN'T FIND CONFIGURATION FILE.** This means that your Nokia is ready to go, but you still need to create your custom interface using the Config Utility.

If your home screen comes up, that means you must have already created and copied a configuration file onto the Nokia. Otherwise, tap the EXIT button to quit the NK8 software and proceed on to the next chapter.

CHAPTER 3 - THE NK8 CONFIG UTILITY

The NK8 Config Utility is an application designed to help you quickly and easily build a custom interface to control your home. The application will connect to your ISY and download the current list of devices & scenes that you have configured. Using the NK8 Config Utility, you simply drag and drop to create your interface!

The latest version of Java is required (currently v1.6), so please be sure Java is already installed before continuing.

Please double-click the installation file to install the NK8 Config Utility. You can find the installation file within a folder called "interfaceGO NK8 Config Utility" on your CD, or within a separate .zip file provided to you with your purchase. Follow the on-screen instructions to complete the installation

After installation is complete, an icon is created on your desktop. Double-click the icon to launch the NK8 Config Utility. The login screen provides two connection methods – the default is UPnP, which is preferred for most users. If your ISY is located on a different IP subnet, choose the IP connection option instead. When using the IP connection method, you must provide the URL to access your ISY along with your ISY's UUID. The HOST field would be your ISY's URL in the form of "http://mydomain.com" or "http://xxx.xxx.xxx.xxx". The UUID field would be your ISY's UUID (available from the ISY's Administrative Console's HELP/ABOUT screen. Please type it in using the format "uuid:xx.xx.xx.xx.xx.xx".

The login screen also prompts for your ISY's username and password. Please be sure to type in your ISY's correct username and password, and then hit LOGIN to connect. Once the Config Utility comes up, please wait 5-10 seconds for your ISY's available devices to populate on the left. If you did not type the correct ISY username and password, the NK8 Config Utility will be unable to download the list of devices and scenes from your ISY.

Below is a screenshot of the Config Utility's interface. Let's get familiar with it.



The interfaceGO NK8 Config Utility

The NK8 Config Utility has standard pulldown menus, allowing you to LOAD an existing configuration file, SAVE your current configuration file, etc. Below are descriptions for everything else.

1 – USER/PASSWORD. The username and password for your ISY. These values are auto-populated with the values provided to sign on to your ISY. This must be correct, otherwise the configuration file you create will not work.

2 – MODE. In the vast majority of cases, leave this set to UPnP. If you'd like to create a configuration file to control your home from outside of your LAN, you will need to change this to IP mode and fill out the appropriate fields (HOST and UUID). The HOST field would be your outside accessible IP address or URL in the form of "http://mydomain.com" or "http://xxx.xxx.xxx.xxx". The UUID field would be your ISY's UUID (available from the ISY's Administrative Console's HELP/ABOUT screen. Please type it in using the format "uuid:xx.xx.xx.xx.xx.xx". Setting the mode to DEMO will stop the NK8 from connecting to the ISY. Your interface will still operate, but will not send data to/from the ISY. This option is great for off-site demonstration purposes.

3 – LOG. This is for diagnostics purposes only. Setting this value to something other than 0 will force the creation of a log file on the Nokia for troubleshooting purposes. During normal use, please leave this set to 0.

4 – SHOW EXIT. This option allows you to choose whether or not you want an obvious EXIT button shown on your interface. The value "true" displays an obvious EXIT button on the upper-right hand corner of the screen. The value "false" hides the large exit button but creates a small hidden exit button in the top-right most corner of the screen, clickable only with the Nokia's pen or other small object.

5 – ILLUMINATION. By default, a "folder" widget will "illuminate" if a contained widget is ON. Unchecking the "On" box under "Illumination" will turn this feature off for the entire interface.

6 – DEVICES. Check this box to show 'devices' configured on the ISY. Uncheck this box to hide them from the list.

7 – SCENES. Check this box to show 'scenes' configured on the ISY. Uncheck this box to hide them from the list.

8 – LIST. This is a list of devices and/or scenes currently stored on the ISY. Once you create a widget, you can drag and drop from this list to create your interface.

9 – WIDGETS. These are the buttons you can drag and drop onto your virtual interface to create your layout - more on these later.

10 – HOME/BACK. These buttons will help you to maneuver around your virtual interface. HOME brings you back to your top level folder, while BACK simply moves you up one folder in the hierarchy

11 – VIRTUAL INTERFACE. This is the heart of the Config Utility. Drag and drop widgets onto here to create your layout. Drag devices/scenes onto widgets. Click on a widget to select and change its settings. Double-click on a folder widget to go into that folder. Right-click on a widget to pop up the delete option. Click and drag a widget to relocate it within the current folder.

12 – PAGE LEFT/RIGHT. Use these buttons to display more pages within the current folder. If you want more than 6 or 8 widgets within a folder, you may need to use multiple pages.

13 – CURRENT FOLDER. This shows the name of the folder you are currently in.

14 – FOLDER PROPERTIES. This lets you configure options for the currently displayed folder, such as its name and whether you want to use a 6 or 8 button widget layout. It also shows the complete path of the currently displayed folder.

15 – WIDGET PROPERTIES. This lets you configure options for the currently selected widget - such as its name, its address, and its type. Options may vary depending on the type of widget selected.

16 - SHOW ALERTS. This button, if lit, will inform you of any problems that the Config Utility has detected. For example, if you load in an existing configuration file that contains a device that is no longer on the ISY, an "alert" will display reminding you to fix the issue.

Here is a list of the various widgets available, and some information on what they do.

- **FOLDER.** A "folder" widget is just what it implies – a folder where you can store more widgets. Double-clicking a folder widget brings you down one level of the hierarchy, into that folder. Hitting the BACK button brings you back up one folder level. The current folder can be configured to either display 6 or 8 "Widgets Per Page". You can also rename a folder and choose its icon. A handful of icons are available from a drop-down menu to suit your preference. A "folder" widget will "illuminate" on the live interface if one or more of its contained widgets is ON.
- **RELAY.** A "relay" widget is a device or scene with only ON/OFF controls. You can drag a dimmer onto this widget, but you will not have BRIGHT/DIM controls on your touch screen interface – which is sometimes desired. A relay widget allows a device OR scene to be dropped over it. In the case of a scene, you must choose a 'primary device' from a list of scene 'members'. This primary device is the device used to show the status of the relay (ON or OFF). This is useful in situations where you have a group of devices you want to control, but would like to use a single device to show the scene's status. For example, a kitchen table light controllable by 3 different switches - you would drag the scene containing those 3 switches onto the relay widget, then choose one of those switches to represent the status of the scene.
- **DIMMER.** A "dimmer" widget is similar to the relay widget described above. You can still drag a device or scene onto this widget, however it will also show the current dim level and allow BRIGHT/DIM controls to be sent via the touch screen interface to the selected device or scene. On your live interface, tapping this widget will toggle the device/scene between ON and OFF - but pressing and holding this widget will bring up the additional BRIGHT/DIM controls.
- **SCENE.** A "scene" widget is specifically used to control a scene stored on the ISY. For example a "dinner time" scene or a "goodnight" scene. Since the ISY does not keep track of the "status" of a scene, no status indicator is displayed on the widget. If you select this widget, you can choose whether it's a relay scene (ON or OFF only) or dimmer scene (adds BRIGHT/DIM to the control screen). On your live interface, tapping this widget will always send an ON command to that scene. However, pressing and holding this widget will bring up a control screen where you can choose from a variety of commands to send to the scene (ON & OFF, and if it's a dimmable scene then BRIGHT & DIM as well).

- **COMMAND.** A "command" widget is used to send a single explicit command to a device or scene. Simply drag over the device or scene you want to use, and choose the command you want to be sent when the widget is tapped on your live interface. This is useful in situations where you want a quick and easy way to send a single command. For example, drag a "1st floor" scene onto this widget and choose an OFF command to create an easy way to turn your "1st floor" scene off before bed.
- **THERMOSTAT.** A "thermostat" widget is used to control an Insteon Thermostat device. On your live interface, this widget will display the current temp of that thermostat. Pressing the widget will bring up a control screen where you can see the mode the thermostat is in and also display/change the current set point.
- **INPUT OUTPUT.** An "input output" widget is intended to be used with devices such as the EZIO series of controllers, but can be used with any type of on/off device. Common uses would be a relay to control a garage door, or something similar. There are several different icons available, allowing you to choose which color you'd like the "on" indicator light to be, and also allowing you to choose a garage icon instead of the standard "I/O" icon. On your live interface, this widget will toggle the associated device between ON and OFF when tapped.
- **ALARM.** An "alarm" widget is used to control an ISY-compatible security system (currently the Elk M1G). This widget will show you whether or not the security system is armed - a red LED indicates that the system is armed. Pressing the widget will bring up the control screen where you can arm or disarm the system.
- **WEBCAM.** A "webcam" widget allows you to view a compatible camera's image right from your Nokia. The NK8 for Nokia will show you a still image from the webcam, automatically refreshing it approximately every 5 seconds. Please paste your webcam's 320x240 still image URL into the "Still URL" field (*for example: <http://webcam.mydomain.com/SnapShotJPEG?Resolution=320x240>*). The "Stream URL" and "Stream Pref." options are not used on the NK8. For a list of known working webcams, please see the support section of our web site.
- **ENERGY.** An "energy" widget allows you to view realtime electricity usage if you are using the ISY's energy monitoring functionality. The ISY currently supports the Brultech electricity meter.

Most widgets which show an ON/OFF indicator have 2 options under "Widget Properties" that warrant further explanation. They are:

- **BEHAVIOR.** A widget with the "Status Only" box checked under "Behavior" will not allow control within the live interface. The widget will display the current status of the device, but tapping the widget will not control the device.
- **ILLUMINATE.** By default, a "folder" widget will "illuminate" if a contained widget is ON. Unchecking the "On" box under "Illuminate" will exclude the corresponding widget from this status check.

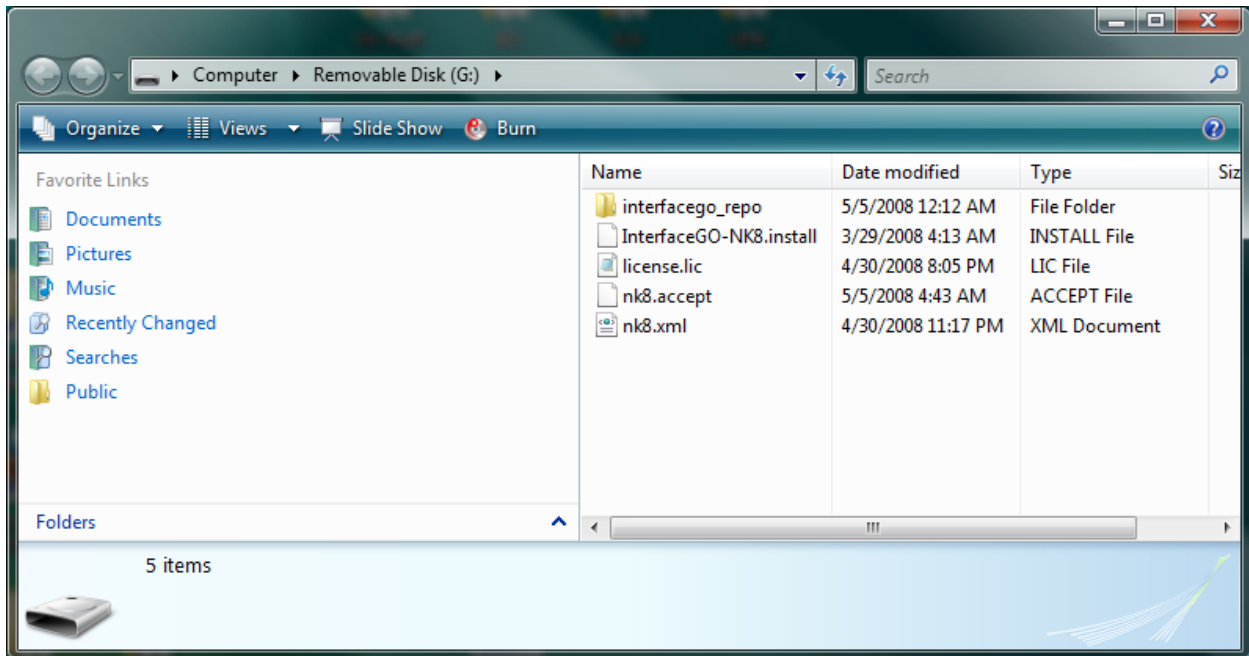
To start building your interface, simply drag and drop widgets onto your virtual interface, then drag and drop devices/scenes onto those widgets. Adjust the names & settings as needed.

When complete, hit FILE, then SAVE AS to choose a location to save your configuration. The default location is your "My Documents\interfaceGO" folder (or "Documents\interfaceGO" on Vista). Please name your configuration file "nk8.xml" as this is the named used by the NK8 software. Once your file is saved, simply copy it to the Nokia's memory card location by re-attaching the Nokia to your PCs USB port, or do a second SAVE AS to save it directly onto your Nokia's memory card from within the Config Utility.

We highly recommend saving your configuration file to at least two different locations for backup purposes.

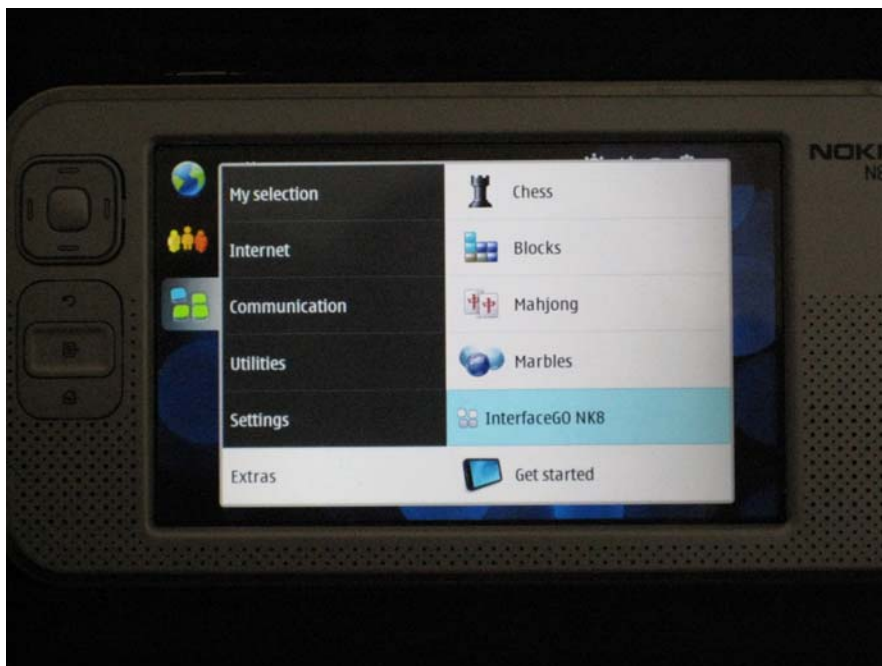
CHAPTER 4 - RUNNING THE NK8 SOFTWARE

Now that you've created your interface and saved the "nk8.xml" file to your Nokia, the memory card location should look similar to this:



Your Nokia's memory card

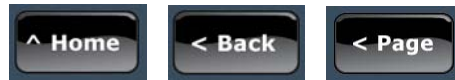
Be sure to unplug the Nokia from your PC (remember that having the USB cable plugged in stops anything but the PC from using the memory card), then simply tap the interfaceGO launch icon to start and test your interface.



The interfaceGO launch icon

In 20 to 40 seconds your live interface should be up and ready to use! Remember the following:

-
- **NAVIGATION BUTTONS.** Tapping the black navigation buttons on the top and bottom of the screen allow you to move through your interface's hierarchy.



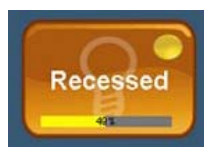
-
- **FOLDER WIDGETS.** Tapping a folder widget brings you into that folder.



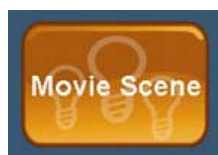
-
- **RELAY WIDGET.** Tapping a relay widget toggles the associated device or scene ON or OFF.



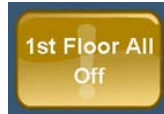
-
- **DIMMER WIDGET.** Tapping a dimmer widget toggles the associated device or scene ON or OFF. Pressing and holding this widget brings up additional controls.



-
- **SCENE WIDGET.** Tapping a scene widget sends an ON command to the associated scene. Pressing and holding this widget brings up additional controls.



-
- **COMMAND WIDGET.** Tapping a command widget sends a single user-definable command (set via the Config Utility) to the associated device or scene.



-
- **THERMOSTAT WIDGET.** The thermostat widget shows you the current temperature in that zone. Tapping the widget brings up the control screen to change the set point and display the thermostat's current mode.



-
- **INPUT OUTPUT WIDGET.** Tapping an input output widget toggles the associated device ON or OFF.



-
- **ALARM WIDGET.** The alarm widget will show a red indicator light if your system is currently armed. Tapping the widget brings up the control screen where you can arm or disarm your security system.



-
- **WEBCAM WIDGET.** Tapping a webcam widget will bring up the image from the specified webcam, automatically refreshing approximately every 5 seconds.



-
- **ENERGY WIDGET.** Tapping an energy widget will bring up the energy monitoring screen where you can see your current electricity usage & cost. The energy widget will show a red indicator light if your current pricing threshold has been exceeded (as reported by the ISY).



If you ever need to exit the application, simply tap the black EXIT button (if shown) or use the Nokia's pen to tap the top-right most corner of the screen to hit the hidden exit button.

CHAPTER 5 – UPGRADING YOUR SOFTWARE

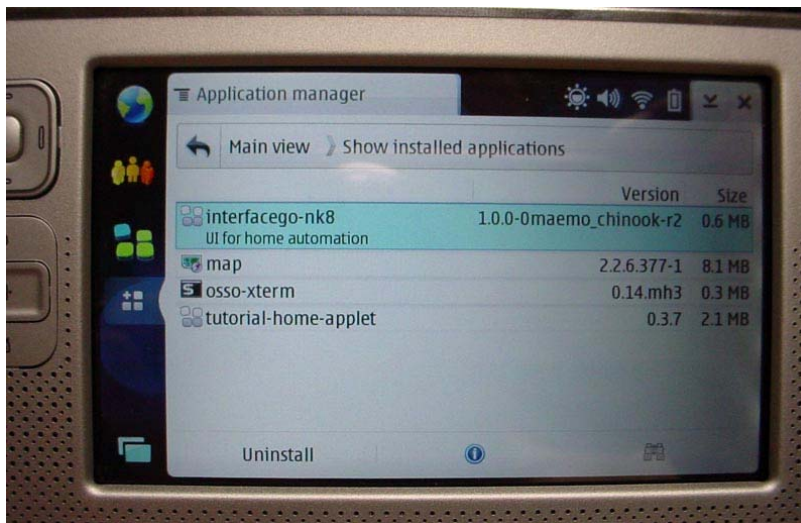
Upgrading your NK8 software is a simple process.

For the NK8 Config Utility, simply "uninstall" the application through "Add/Remove Programs" (or "Programs and Features" on Vista) found within your PC's Control Panel. Once the application is uninstalled, simply install the updated version per the instructions found in "Chapter 3". Your license file and configuration files will stay intact.

For the NK8 software, run the Nokia's "Application Manager" found under its UTILITIES menu. Tap "Show Installed Applications", then simply tap "interfacego-nk8" to select and hit the "Uninstall" button. Follow the on-screen prompts to remove the software. Once uninstall is complete, simply attach the Nokia to your PC and follow the instructions in "Chapter 2" to install the updated version. Your license file and configuration files will stay intact.



Running the Application Manager



Uninstalling the NK8 software

APPENDIX A: TROUBLESHOOTING

What do I need to use the interfaceGO NK8?

You will need a Universal Devices ISY-series home automation controller (running the latest firmware, currently 2.6.4) attached to your wifi network. You will also need a Nokia N800 or N810 (available with the NK8 in a bundle) running OS2008, and a supported lighting control system (currently Insteon). Security system support requires an Elk M1G. Webcam support has been tested on the Panasonic BL-C1A, but may work on other 320x240 webcams that offer a still image URL.

Does the interfaceGO NK8 also run on the Nokia 770?

The NK8 will NOT run on the Nokia 770.

Which memory card slot on the Nokia N800 does the config file and license file need to be stored on?

Please be sure to store your config file on the memory card located in the slot on the BOTTOM of the Nokia N800/N810 (behind the pop-out stand). The config file cannot be read from the memory card slot located in the battery compartment or the internal memory location.

Why does my Nokia lose its connection to the ISY?

Since the NK8 is in constant communication with the ISY, a reliable wifi network is required. Please make sure you have good wireless range in the areas you're using the NK8, and that you have no interference from other devices (2.4 Ghz phones, baby monitors, etc.) If a disconnect is detected, the NK8 will do its best to reconnect without the user even knowing it. On a reliable wifi network, however, disconnects should be very rare.

Why is the time wrong on my NK8 software?

Be sure that the time and 'home city' are set correctly on the Nokia - check the Date/Time control panel application. Also be sure that you are creating your config file from a PC set to the correct time zone.

Why am I getting the error "Operation Failed" when trying to install the NK8 on my Nokia?

Be sure you are running OS2008 on the Nokia. The NK8 software will NOT run on OS2007.

Why is the NK8 Config Utility not running on my PC?

Be sure that you have the latest Java (currently 1.6) installed from www.java.com.

Why isn't the NK8 Config Utility downloading the list of devices & scenes from my ISY?

The config utility uses UPnP to connect to the ISY and download the list of devices & scenes. If they are not showing up, be sure you are typing the correct username and password for your ISY, and be sure that you are able to establish a good UPnP connection with the ISY. If the ISY's Admin Console will not connect to the ISY from your PC, neither will our Config Utility.

Why am I getting a 'LICENSE ERROR' on startup?

Your NK8 software must be activated before using. If you purchased your Nokia direct from us, your order came with a "license.lic" file. If you have not yet received your license file, please contact support@interfacego.com and provide us your activation code (displayed on-screen). Once received, the "license.lic" file must be copied to the root folder of your Nokia's memory card for the NK8 software to run.

What is the Nokia's battery life?

Battery life will vary dramatically depending on screen settings and type of use. At default screen settings, our experience on an N800 is that a full charge on a new battery will last for 20-26 hours of typical use, running the NK8 software full-time. This is with wifi enabled, but Bluetooth disabled. Of course, the Nokia can always be left plugged in via its included AC adapter.

Can I control my home with the NK8 software through the internet?

Yes, the N800/N810 can be configured to control your home from any wifi internet connection - as long as your router and ISY are configured to allow external access. The NK8 currently supports HTTP access only - it does not support HTTPS. In the Config Utility, be sure to choose the "IP" connection method and fill in the appropriate fields. Please keep in mind that an HTTP connection is not encrypted, so use this connection method at your own risk.

Why can't I connect to my ISY over the internet?

Make sure you are connecting via "IP" mode. Be sure you have the ISY configured for access via the internet. Be sure you have the 'Host' value typed in correctly (<http://xxx.xxx.xxx.xxx>). Be sure you have the 'UUID' typed in correctly (`uuid:xx.xx.xx.xx.xx.xx`). You can find your UUID on the HELP, ABOUT window of the ISY's Administrative Console. The NK8 will NOT work over an HTTPS connection.

Is the interfaceGO NK8 for Nokia compatible with the NK8-PC application?

Yes. Because both software packages share the same configuration utility, a layout created for one application will work with the other.

Is there a way to adjust or disable the Nokia's screen saver?

Yes. Under the Nokia's Control Panel, under the Display option, you can configure the amount of inactivity time before the screen saver activates. You can also configure the Nokia to always keep the screen on when charging.

APPENDIX B: SOFTWARE LICENSE AGREEMENT

This is a legal agreement between you, the end user, and interfaceGO, a division of MB DataSystems, Inc. This agreement covers the interfaceGO NK8 (and/or NK8-PC) software as well as the interfaceGO Config Utility (all referred to as "Software" in the remainder of this agreement). By installing this Software, you agree to be bound by the terms of this agreement.

1. Grant of License. interfaceGO hereby grants to you (an individual) the revocable, personal, non-exclusive, and nontransferable right to install and activate the Software on a single computer. Sharing this Software with other individuals is in violation of this license. You may not make copies of this Software or allow copies of this Software to be made by others. You may make copies of the Software for backup purposes only.

2. Copyright. The Software is owned by interfaceGO and protected by United States and international copyright law. You may not remove or conceal any proprietary notices, labels or marks from the Software.

3. Restrictions on Use. You may not, and you may not permit others to (a) reverse engineer, decompile, decode, decrypt, disassemble, or in any way derive source code from, the Software; (b) modify, distribute, or create derivative works of the Software; (c) copy (other than one back-up copy), distribute, publicly display, transmit, sell, rent, lease or otherwise exploit the Software.

4. Term of Agreement. The term of this Agreement begins upon installation of this Software. interfaceGO reserves the right to terminate this Agreement at any time if you violate any provision of this Agreement. If the Agreement is terminated for any reason, you agree immediately to discontinue use of this Software.

5. LIMITED WARRANTY

(A) FOR A PERIOD OF 30 DAYS FROM THE DATE OF PURCHASE, THE CD-ROM OR OTHER MEDIA ("MEDIA") THAT CONTAINS THIS SOFTWARE IS WARRANTED TO BE FREE FROM DEFECTS IN MATERIAL AND WORKMANSHIP. IF THE MEDIA IS DEFECTIVE OR FAULTY IN WORKMANSHIP, YOU MAY RETURN THE MEDIA TO INTERFACEGO AT THE ADDRESS BELOW WITH A WRITTEN DESCRIPTION OF THE DEFECT, AND INTERFACEGO WILL REPLACE THE MEDIA WITHOUT CHARGE. REPLACEMENT OF THE MEDIA IS YOUR SOLE AND EXCLUSIVE REMEDY AND INTERFACEGO'S SOLE LIABILITY:

Address for Returned Software:

interfaceGO
9 C Medway Road
Milford, MA 01757

(B) EXCEPT FOR EXPRESS PROVISIONS IN PARAGRAPH (A), THE SOFTWARE AND ACCOMPANYING WRITTEN MATERIALS ARE PROVIDED ON AN "AS IS" BASIS, WITHOUT ANY WARRANTIES OF ANY KIND, INCLUDING, BUT NOT LIMITED TO, ANY IMPLIED WARRANTIES OF MERCHANTABILITY OR FITNESS

FOR ANY PARTICULAR PURPOSE. NO ORAL OR WRITTEN INFORMATION OR ADVICE GIVEN BY INTERFACEGO, ITS DEALERS, DISTRIBUTORS, AGENTS OR EMPLOYEES SHALL CREATE A WARRANTY, OR IN ANY WAY INCREASE THE SCOPE OF THIS WARRANTY, AND YOU MAY NOT RELY ON ANY SUCH INFORMATION OR ADVICE. INTERFACEGO DOES NOT WARRANT, GUARANTEE, OR MAKE ANY REPRESENTATIONS REGARDING THE USE OR THE RESULTS OF USE, OF THE SOFTWARE OR WRITTEN MATERIALS IN TERMS OF CORRECTNESS, ACCURACY, RELIABILITY, CURRENTNESS, OR OTHERWISE, AND THE ENTIRE RISK AS TO THE RESULTS AND PERFORMANCE OF THE SOFTWARE IS ASSUMED BY YOU. IF THE SOFTWARE OR WRITTEN MATERIALS ARE DEFECTIVE, YOU, AND NOT INTERFACEGO OR ITS DEALERS, DISTRIBUTORS, AGENTS, OR EMPLOYEES, ASSUME THE ENTIRE COST OF ALL NECESSARY SERVICING, REPAIR OR CORRECTION OTHER THAN EXPRESSLY DESCRIBED ABOVE.

(C) NEITHER INTERFACEGO NOR ANYONE ELSE WHO HAS BEEN INVOLVED IN THE CREATION, PRODUCTION OR DELIVERY OF THIS PRODUCT SHALL BE LIABLE FOR ANY DIRECT, INDIRECT, CONSEQUENTIAL OR INCIDENTAL DAMAGES (INCLUDING DAMAGES FOR LOSS OF BUSINESS PROFITS, BUSINESS INTERRUPTION, LOSS OF BUSINESS INFORMATION, AND THE LIKE) ARISING OUT OF THE USE OR INABILITY TO USE SUCH PRODUCT OR RELATED TO THIS AGREEMENT, EVEN IF INTERFACEGO HAS BEEN ADVISED OF THE POSSIBILITY OF SUCH DAMAGES. INTERFACEGO SHALL NOT BE LIABLE TO YOU FOR ANY INDIRECT, SPECIAL, INCIDENTAL, OR CONSEQUENTIAL DAMAGES OR LOST PROFITS ARISING OUT OF OR RELATED TO THIS AGREEMENT OR YOUR USE OF THE SOFTWARE AND/OR THE RELATED DOCUMENTATION, EVEN IF INTERFACEGO HAS BEEN ADVISED OF THE POSSIBILITY OF SUCH DAMAGES. IN NO EVENT SHALL INTERFACEGO'S LIABILITY HEREUNDER, IF ANY, EXCEED THE PURCHASE PRICE PAID BY YOU FOR THE SOFTWARE.

6. General. This Agreement and any dispute under it will be governed by the laws of the State of Massachusetts and the United States of America, without regard to their conflict of laws principles. Both parties consent to the exclusive jurisdiction and venue of the federal and state courts in the state of Massachusetts. This Agreement constitutes the entire agreement between you and interfaceGO with respect to its subject matter, and supersedes other communication, advertisement, or understanding with respect to the Software. This Agreement may not be amended or modified except in a writing executed by both parties. If any provision of this Agreement is held invalid or unenforceable, the remainder shall continue in full force and effect. All provisions of this Agreement relating to disclaimers of warranties, limitation of liability, remedies, or damages, and interfaceGO's ownership of the Software survive termination.

ACKNOWLEDGMENT

BY INSTALLING THE SOFTWARE, YOU ACKNOWLEDGE THAT YOU HAVE READ AND UNDERSTAND THE FORE GOING AND THAT YOU AGREE TO BE BOUND BY ITS TERMS AND CONDITIONS. YOU ALSO AGREE THAT THIS AGREEMENT IS THE COMPLETE AND EXCLUSIVE STATEMENT OF AGREEMENT BETWEEN THE PARTIES AND SUPERSEDES ALL PROPOSED OR PRIOR AGREEMENTS, ORAL OR WRITTEN, AND ANY OTHER COMMUNICATIONS BETWEEN THE PARTIES RELATING TO THE LICENSE DESCRIBED HEREIN.